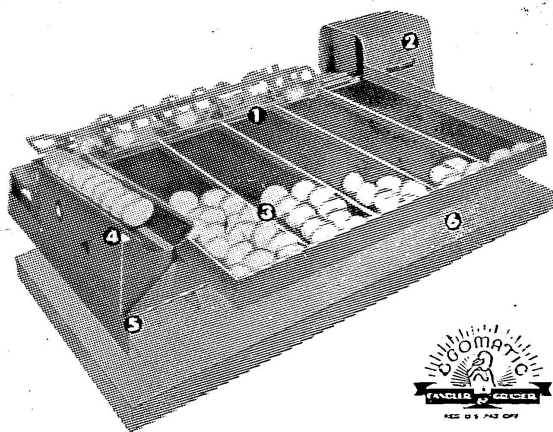


SETTING UP, OPERATING AND SERVICING YOUR MODEL 160 EGOMATIC EGG GRADER & CANDLER

Please Read these Instructions Several Times and Follow Precisely.



(For operation on 240 Volt 50 Cycle A.C. properly earthed Power Point only.)

SETTING UP:

Your Egomatic has been factory operated and tested before despatch. Scales have been preset to grade approximately as follows:—2 oz; 1½ oz; 1¼ oz; 1½ oz; all eggs weighing less than 1½ oz; will be released on to the last tray.

Place your Egomatic Grader on a firm level surface. Level up the grader by using a small level and adjusting bolts in each corner of the grader base. Failure to level the machine from end to end and front to back can cause inaccuracy of grading.

OILING AND LUBRICATING:

The frequency of lubrication is a matter of judgement depending on the daily usage. Two drops of fine oil on the motor bearings and the two oil impregnated felt pads of the gear box every month is suggested. Generally a monthly lubrication of all other moving parts is recommended. **DO NOT OIL** the self equalizing scale pivots otherwise dirt and grit will gather and cause friction and failure to weigh the eggs correctly.

EGG RECEIVING TRAY:

Do not let the graded eggs accumulate directly in front of the scales so that succeeding eggs cannot leave the scales freely. Ensure metal dividers and the rubber mats do not get under the egg channel carrier or interfere with its free movements. This can cause motor overload and scoring of the channel.

GRADING SCALES:

Your Egomatic Scales can be adjusted to any desired weight by simply turning the knurled nuts at back of each respective scale (turning inward to decrease and outward to increase weight).

After correct weight has been maintained and before locking knurled nuts together it is advisable to turn nuts one half revolution outwards. This will allow scales to grade a fraction over weight and so overcome any problem of marginal under grade eggs.

Check your egomatic regularly to ensure only full grade eggs are released into their respective compartments.

Grading scale rails must always be square and level when in rested position; should they get out of level bend slightly in the required direction. Refer to diagram for setting levelling and other details of grading scales.

A metal tool box containing a level, screw driver, spanner and set of metal test eggs can be purchased separately.

GENERAL:

Always operate with at least 4 to 5 eggs in the egg shute. Do not let the eggs roll all the way down the shute as this can cause hair-line cracks or breakage.

If the motor or working parts labor or stop for any reason, quickly switch off the motor and immediately ascertain the cause. Keep delivery channel, bar and scales free from feathers, dust, and debris.

The egg release arm is preset to permit normal farm eggs to release freely. Extra large or extra small eggs should not be put on the grader, neither should misshapen or cracked eggs.

Do not tamper with your machine. Egomatic graders will operate accurately for lengthy periods without need for replacement parts. When parts become worn or damaged beyond adjustment, replacements should be made promptly and key numbers quoted when ordering. See reverse side for part name and number.

HELPFUL HINTS FOR OPERATORS:

Always clear the egg from the machine before shutting off the motor.

If the Candler bulb burns out, replacement can be made by removing the four small screws of the egg shute.

If adjustment of the slope of the egg shute is needed, this can be accomplished by adjusting the four nuts on the two bolts at the rear the shute.

Do not tilt the scales by hand while the grader is working. The scales are always locked in position except when lock is open for weighing. If scales are forced, the sensitive mechanism will be damaged.

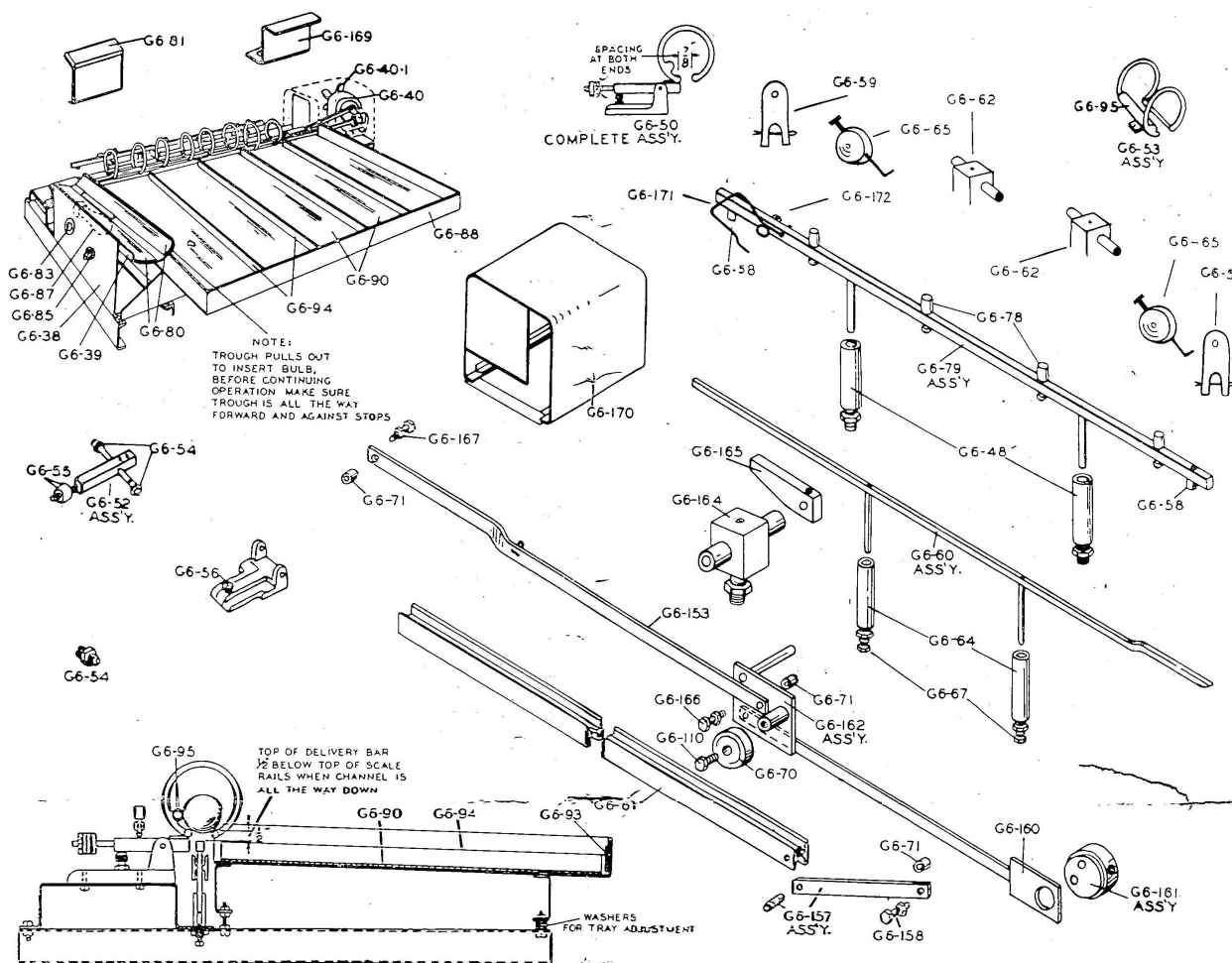
The Electric Motor of the grader should be operated only from a 240 Volt, 50 Cycle, A.C. properly earthed power point.

MANUFACTURED IN AUSTRALIA UNDER LICENCE BY:

MULTIPLO INCUBATOR & BROODER PTY. LTD.
85-91 QUAY STREET, SYDNEY

Telegraphic Address: "MULTIPLO", SYDNEY

Telephones: MA 2052 — MA 9063



PARTS LIST FOR H 160 EGG GRADER.

G6—38	Candling Trough Support and Switch Assembly.	G6—81	Egg Stop with Rubber.
G6—39	Candling Trough with Rubber Matting.	G6—83	Candling Grommet.
G6—40	Ratio Motor, 240 V.A.C., 50 Cycle, Single Phase.	G6—85	Electric Switch.
G6—40-1	Motor Fan.	G6—87	75 Watt Electric Bulb (Bayonet type).
G6—48	Scale Lock Sleeve.	G6—88	Egg Receiving Tray (Metal only).
G6—50	Scale Lock Assembly (complete).	G6—90	Rubber Matting Pads.
G6—52	Scale Beam Assembly.	G6—93	Rubber Tray Lining.
G6—53	Scale Loop Assembly.	G6—94	Metal Dividers.
G6—54	Scale Bearing Assembly.	G6—95	Scale Rail Rubber.
G6—55	Counter Weights.	G6—110	Bearing Stud.
G6—56	Scale Beam Rest Bolt.	G6—153	Tie Bar.
G6—57	Scale Attachment Screw.	G6—157	Carrier Channel Pitman Arm.
G6—58	Scale Lock Elevation Stud.	G6—158	Stud Assembly—Upper Pitman Arm.
G6—59	Scale Lock Elevation Arm.	G6—160	Elevating Arm.
G6—60	Delivery Control Assembly.	G6—161	Motor Cam Assembly.
G6—61	Carrier Channel, with indentures.	G6—162	Elevation Assembly.
G6—62	Scale Lock Elevation Bearing.	G6—164	Bearing Block Assembly.
G6—64	Delivery Bar Sleeve.	G6—165	Scale Lock Cam Assembly.
G6—65	Scale Lock Pitman.	G6—166	Stud Assembly.
G6—67	Lock Nut and Stud.	G6—167	Stud Assembly.
G6—70	Nylon Wheel and Bearing.	G6—169	5th Grade Discharge Bracket.
G6—71	Bushing.	G6—170	Motor Guard.
G6—78	Scale Lock Self Adjusting Weight.	G6—171	Egg Release Arm.
G6—79	Scale Lock Bar Assembly.	G6—172	Egg Release Arm (Bolt and Bushing).
G6—80	Candling Trough Rubber.		

A Metal Tool Box, containing a Level, Screw Driver, Spanner and Set of Metal Test Eggs can be purchased separately.



Egg Graders and Candler

Model 160 Grader

Precision Built and Designed Especially for the Smaller Flock Owners



NEW LOW COST

**5 weight grades
2100 eggs per hour**

Note these exclusive

Eggomatic Grader advantages

Delivery System - Features 16" x 14" egg flat dis-
posable rollers for moving the eggs forward from the
inlet to 10" x 10" discharge rollers for direct flow
into the collection bins.

Double Check Ejectors - Independently coasted of 100%
solid oak ejectors, adjustable to suit by temperature
change. Factory set for most standard eggs.

50" L. X 38" W. X 27" H. Shipping Wt. 100 lbs.

Some special and exclusive performance advantages

1. Undisplaced grain & waste falling
2. Independent front and side rollers & heated
3. Adjustable capacity for 5 weight grades
4. Power fly catching & waste discharge
5. Padded, polished sheet metal cover
6. Convenient size and weight for any table-top
operation

Model 8-150 Grader - Capacity 2100 Eggs per Hour

Model 8-150 Grader and Grader are shown in the right & the left. Full costs
of material and labor to develop a top quality egg grader and candler with
all the advantages of the Eggomatic commercial equipment, yet within the
price range of the smaller flock owner.

Eggomatic units guarantee increased efficiency, years of trouble-free service,
the most gentle handling and delivery of eggs. Designed for efficiency and
ease of operation.

No. 160 Eggomatic Egg Grader Table Model - 2100 eggs per hour. Dimensions: 50" L. 38" W. 27" H. Ship Wt. 100 lbs.
No. 8-150 Eggomatic Egg Grader same as above but mounted on frame as pictured.

